



MODEL KAWASAKI Z 1000

YEAR 2007-2009

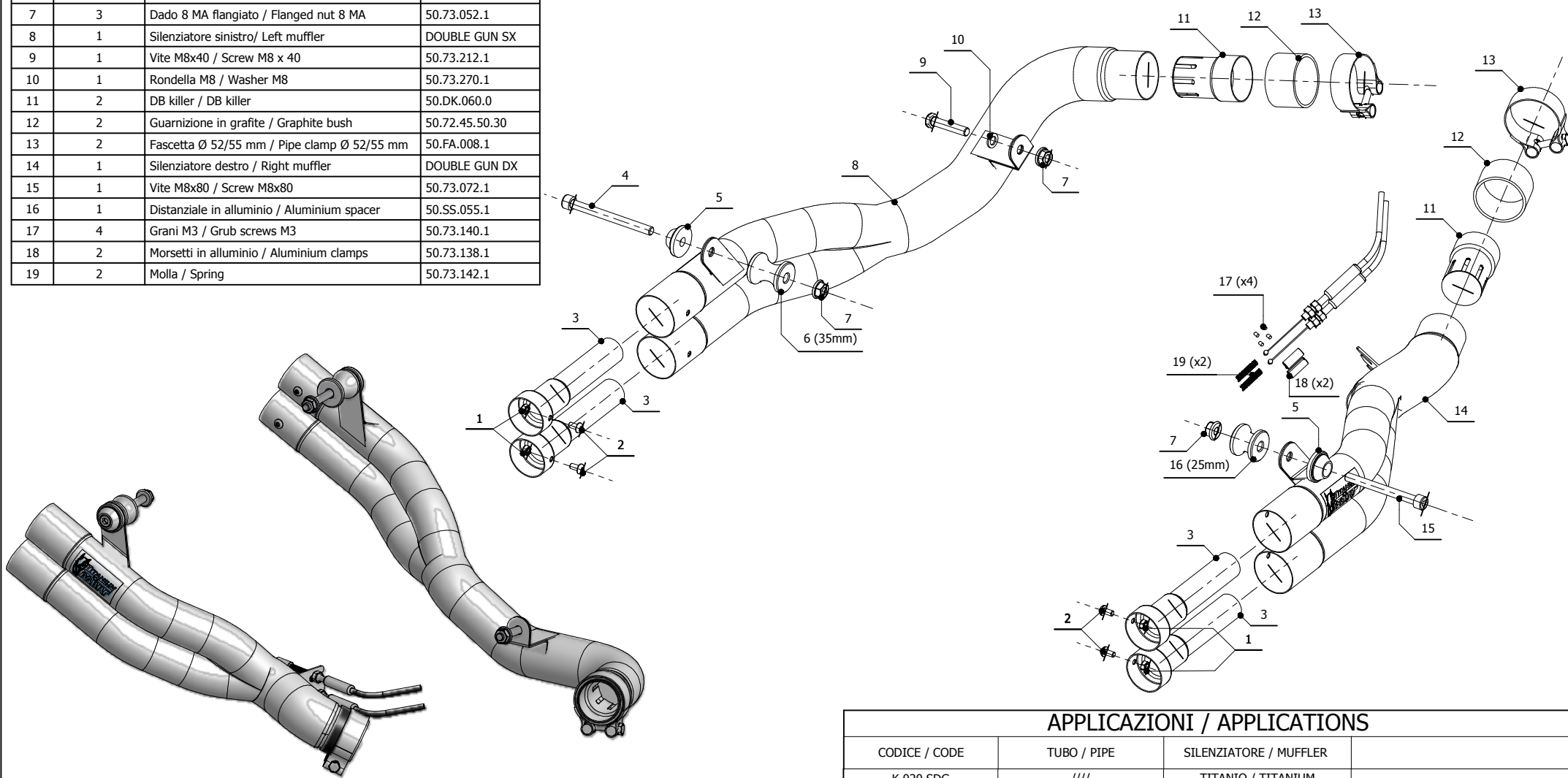
LINE SPORT

MUFFLER DOUBLE GUN

SCHEMATIC

ELENCO PARTI / PARTS LIST

#	QTÀ / QTY	DESCRIZIONE / DESCRIPTION	CODICE / CODE
1	4	Dado M5 / M5 nut	50.73.267.1
2	4	Vite M5 x 8 / Screw M5 x 8	50.73.459.1
3	4	DB killer / DB killer	50.DK.059.0
4	1	Vite M8x90 / Screw M8x90	50.73.073.1
5	2	Rondella alluminio / Aluminium washer	50.73.291.1
6	1	Distanziale in alluminio / Aluminium spacer	50.SS.053.1
7	3	Dado 8 MA flangiato / Flanged nut 8 MA	50.73.052.1
8	1	Silenziatore sinistro/ Left muffler	DOUBLE GUN SX
9	1	Vite M8x40 / Screw M8 x 40	50.73.212.1
10	1	Rondella M8 / Washer M8	50.73.270.1
11	2	DB killer / DB killer	50.DK.060.0
12	2	Guarnizione in grafite / Graphite bush	50.72.45.50.30
13	2	Fascetta Ø 52/55 mm / Pipe clamp Ø 52/55 mm	50.FA.008.1
14	1	Silenziatore destro / Right muffler	DOUBLE GUN DX
15	1	Vite M8x80 / Screw M8x80	50.73.072.1
16	1	Distanziale in alluminio / Aluminium spacer	50.SS.055.1
17	4	Grani M3 / Grub screws M3	50.73.140.1
18	2	Morsetti in alluminio / Aluminium clamps	50.73.138.1
19	2	Molla / Spring	50.73.142.1



APPLICAZIONI / APPLICATIONS

CODICE / CODE	TUBO / PIPE	SILENZIATORE / MUFFLER
K.020.SDG	////	TITANIO / TITANIUM